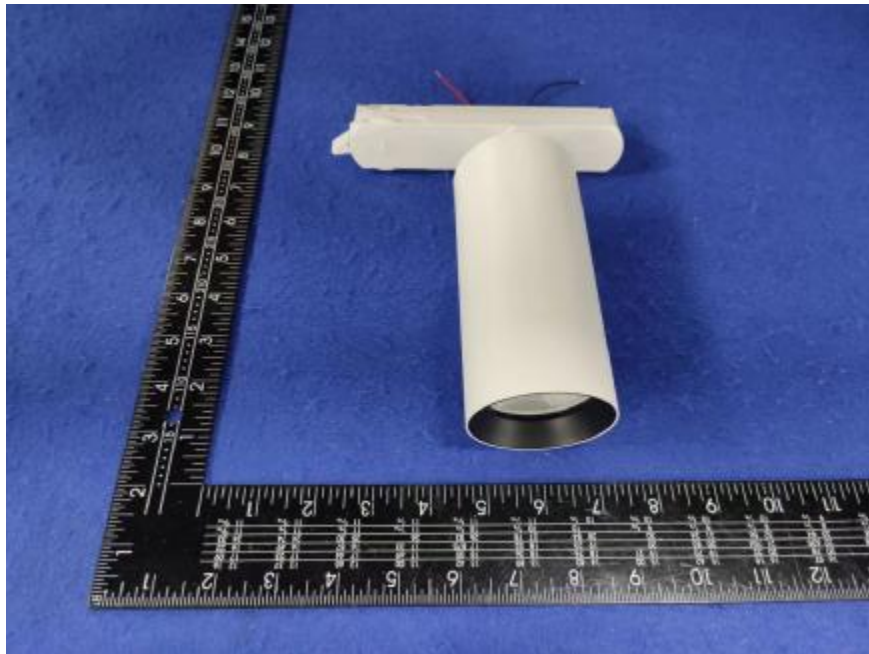


Luminaire Photograph



Light Output Ratio:	92.0%	
Luminaire Power:	15.91 W	
SHR Nominal:	0.75	Calculated using the TM5
SHR Maximum:	0.75	fine grid method.

C Range: 0 - 360DEG
C Interval: 30.0DEG
Test Speed: HIGH
Temperature: 25.3 °C
Operators: zoe
Test Date: 2024-4-7

Range: 0 - 180DEG
Interval: 1.0DEG
Test System: EVERFINE GO-SPEX500_V1 SYSTEM V2.00.461
Humidity: 65.0%
Test Distance: 3.160m [K=1.0000]
Remarks: LAMP: BXRE-40G10TH-A-83 Ra: 90
LENS: PM-0132C 60R
DRIVER: SC42W300-1050CG-4W 400mA
30minutes warm-up

LUMINOUS INTENSITY DISTRIBUTION DIAGRAM

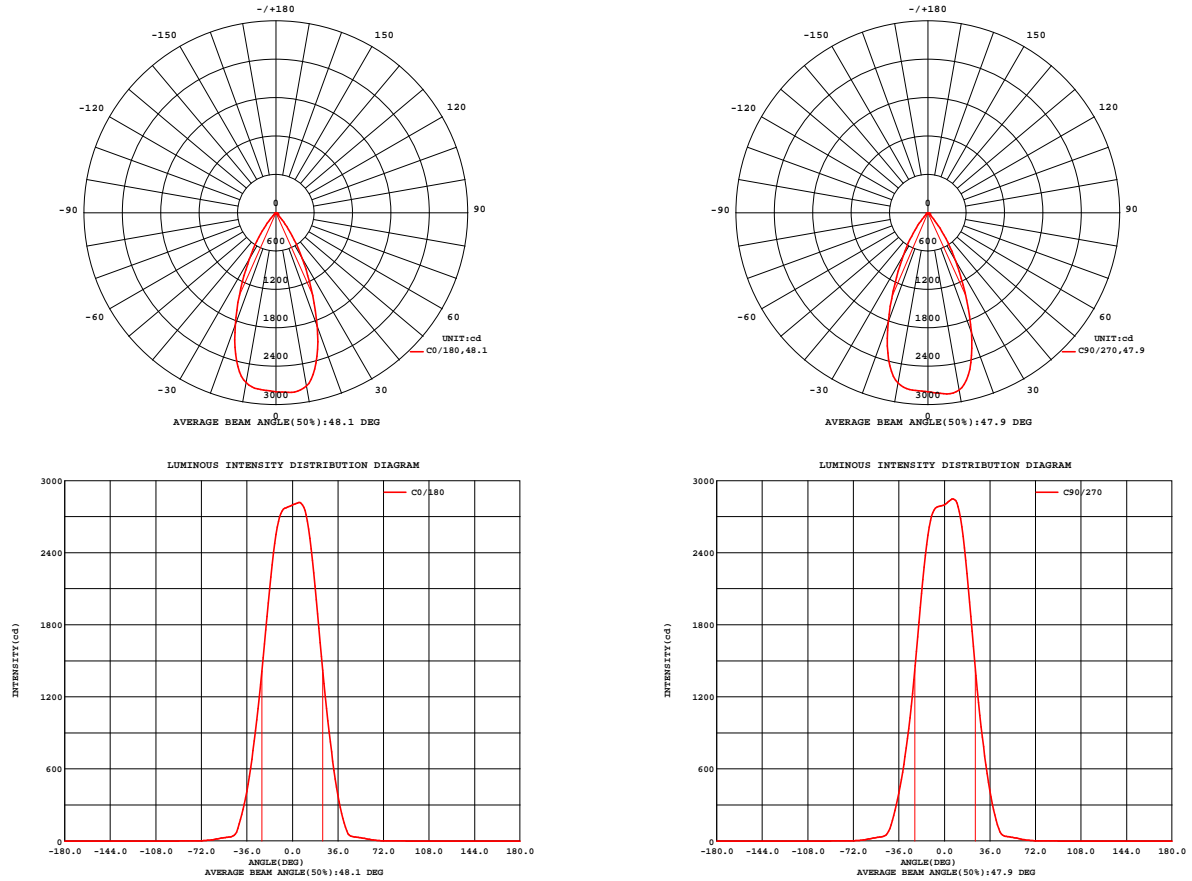


Fig. C0/C180

Fig. C90/C270

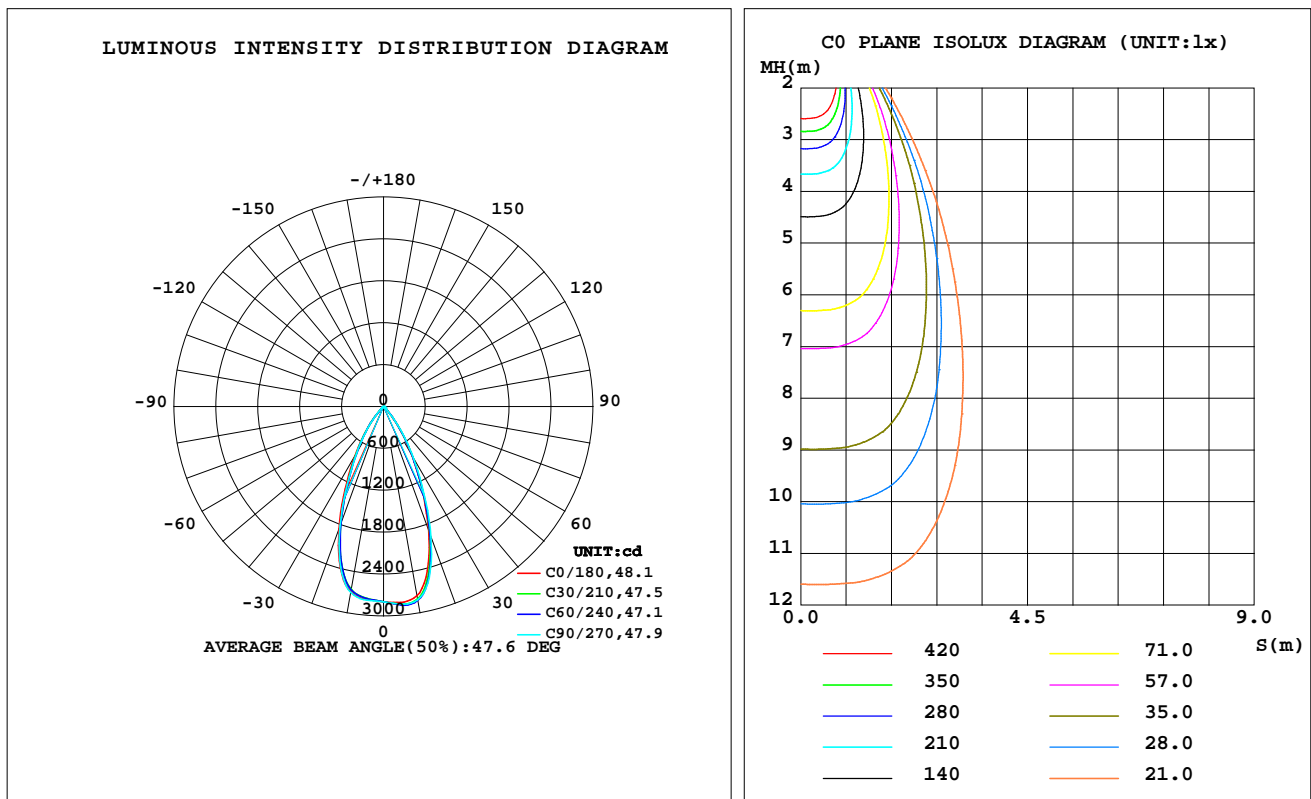
C Range: 0 - 360DEG
C Interval: 30.0DEG
Test Speed: HIGH
Temperature: 25.3 °C
Operators: zoe
Test Date: 2024-4-7

Range: 0 - 180DEG
Interval: 1.0DEG
Test System: EVERFINE GO-SPEX500_V1 SYSTEM V2.00.461
Humidity: 65.0%
Test Distance: 3.160m [K=1.0000]
Remarks: LAMP: BXRE-40G10TH-A-83 Ra: 90
LENS: PM-0132C 60R
DRIVER: SC42W300-1050CG-4W 400mA
30minutes warm-up

LUMINAIRE PHOTOMETRIC TEST REPORT

Test:U:220.12V I:0.0792A P:15.915W PF:0.9089 Freq:49.99Hz Lamp Flux:2089x1 lm		
NAME: 2319.200-UA-400-HE	TYPE:	WEIGHT:
SPEC.: 4000K	DIM.:	SERIAL No.: 2404070260
MFR.: RISE	SUR.: 0.002826m2	Shielding Angle:

DATA OF LAMP		PHOTOMETRIC DATA Eff: 120.73 lm/W			
MODEL	Brideglux	Imax(cd)	2862	S/MH(C0/180)	0.75
NOMINAL POWER(W)	16	LOR(%)	92.0	S/MH(C90/270)	0.73
RATED VOLTAGE(V)	220	TOTAL FLUX(lm)	1921.3	UP,DN(C0-180)	0.0,47.0
NOMINAL FLUX(lm)	2089	CIE CLASS	DIRECT	UP,DN(C180-360)	0.0,45.0
LAMPS INSIDE	1	up(%)	0.0	CIBSE SHR NOM	0.75
TEST VOLTAGE(V)	220	down(%)	92.0	CIBSE SHR MAX	0.75



C Range: 0 - 360DEG
C Interval: 30.0DEG
Test Speed: HIGH
Temperature:25.3℃
Operators:zoe
Test Date:2024-4-7

Range: 0 - 180DEG
Interval: 1.0DEG
Test System:EVERFINE GO-SPEX500_V1 SYSTEM V2.00.461
Humidity:65.0%
Test Distance:3.160m [K=1.0000]
Remarks: LAMP:BXRE-40G10TH-A-83 Ra:90
LENS:PM-0132C 60R
DRIVER:SC42W300-1050CG-4W 400mA
30minutes warm-up

ZONAL FLUX DIAGRAM

ZONAL FLUX DIAGRAM:

	C0	C45	C90	C135	C180	C225	C270	C315		zone	total	%lum,lamp
10	2752	2810	2813	2766	2696	2663	2704	2718	0- 10	265.9	265.9	13.8,12.7
20	1890	1941	1990	1981	1868	1791	1822	1891	10- 20	665.5	931.4	48.5,44.6
30	825.7	838.7	865.0	878.2	832.5	779.6	774.3	828.8	20- 30	600.3	1532	79.7,73.3
40	188.2	201.1	216.7	207.6	220.4	217.2	211.7	202.2	30- 40	296.0	1828	95.1,87.5
50	32.73	36.37	36.06	34.71	32.23	34.31	33.84	32.92	40- 50	60.82	1889	98.3,90.4
60	15.56	17.14	17.70	17.88	16.58	17.00	16.51	16.20	50- 60	23.61	1912	99.5,91.5
70	2.603	3.065	2.945	3.258	2.883	3.079	2.688	2.889	60- 70	8.284	1920	100,91.9
80	0.0526	0.0412	0.0513	0.0432	0.0479	0.0335	0.0407	0.0302	70- 80	0.8783	1921	100,92
90	0	0	0	0	0	0	0	0	80- 90	0.0295	1921	100,92
100	0	0	0	0	0	0	0	0	90-100	0	1921	100,92
110	0	0	0	0	0	0	0	0	100-110	0	1921	100,92
120	0	0	0	0	0	0	0	0	110-120	0	1921	100,92
130	0	0	0	0	0	0	0	0	120-130	0	1921	100,92
140	0	0	0	0	0	0	0	0	130-140	0	1921	100,92
150	0	0	0	0	0	0	0	0	140-150	0	1921	100,92
160	0	0	0	0	0	0	0	0	150-160	0	1921	100,92
170	0	0	0	0	0	0	0	0	160-170	0	1921	100,92
180	0	0	0	0	0	0	0	0	170-180	0	1921	100,92
DEG	LUMINOUS INTENSITY:cd									UNIT:lm		

C Range: 0 - 360DEG
C Interval: 30.0DEG
Test Speed: HIGH
Temperature:25.3℃
Operators:zoe
Test Date:2024-4-7

Range: 0 - 180DEG
Interval: 1.0DEG
Test System:EVERFINE GO-SPEX500_V1 SYSTEM V2.00.461
Humidity:65.0%
Test Distance:3.160m [K=1.0000]
Remarks: LAMP:BXRE-40G10TH-A-83 Ra:90
LENS:PM-0132C 60R
DRIVER:SC42W300-1050CG-4W 400mA
30minutes warm-up

LUMINANCE LIMITATION CURVES

Test:U:220.12V I:0.0792A P:15.915W PF:0.9089 Freq:49.99Hz
Lamp Flux:2089x1 lm

NAME: 2319.200-UA-400-HE

TYPE:

WEIGHT:

SPEC.: 4000K

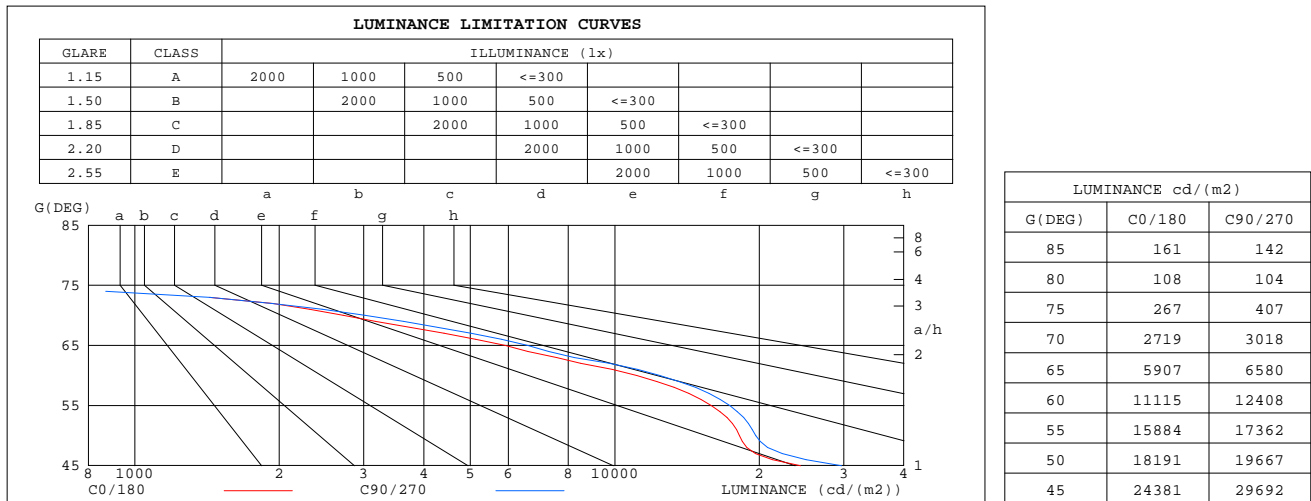
DIM.:

SERIAL No.: 2404070260

MFR.: RISE

SUR.: 0.002826m2

Shielding Angle:



C Range: 0 - 360DEG
C Interval: 30.0DEG
Test Speed: HIGH
Temperature:25.3℃
Operators:zoe
Test Date:2024-4-7

Range: 0 - 180DEG
Interval: 1.0DEG
Test System:EVERFINE GO-SPEX500_V1 SYSTEM V2.00.461
Humidity:65.0%
Test Distance:3.160m [K=1.0000]
Remarks: LAMP:BXRE-40G10TH-A-83 Ra:90
LENS:PM-0132C 60R
DRIVER:SC42W300-1050CG-4W 400mA
30minutes warm-up

CU AND LUMINAIRE BUDGETARY ESTIMATE DIAGRAM

Test:U:220.12V I:0.0792A P:15.915W PF:0.9089 Freq:49.99Hz
Lamp Flux:2089x1 lm

NAME: 2319.200-UA-400-HE

TYPE:

WEIGHT:

SPEC.: 4000K

DIM.:

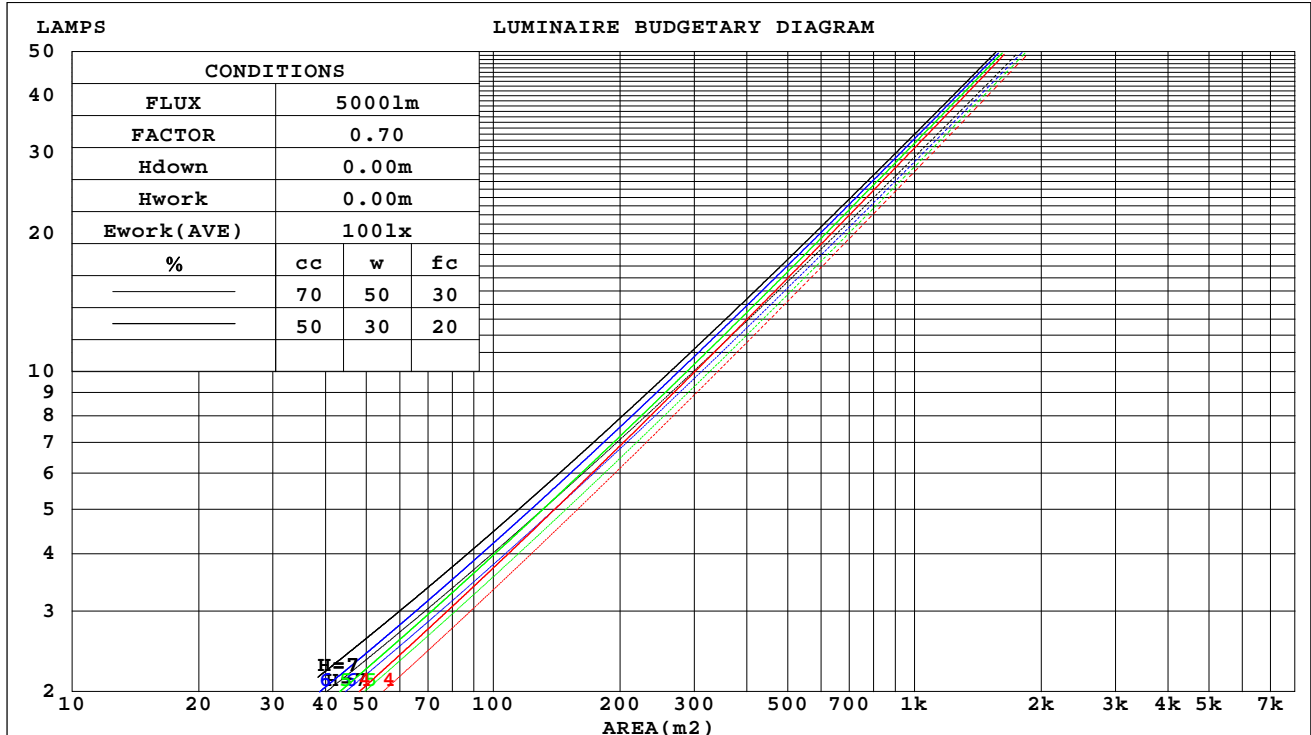
SERIAL No.: 2404070260

MFR.: RISE

SUR.: 0.002826m2

Shielding Angle:

cc	80%			70%			50%			30%			10%			0
w	50%	30%	10%	50%	30%	10%	50%	30%	10%	50%	30%	10%	50%	30%	10%	0
fc	20%			20%			20%			20%			20%			0
RCR	RCR:Room Cavity Ratio															



C Range: 0 - 360DEG
C Interval: 30.0DEG
Test Speed: HIGH
Temperature:25.3℃
Operators:zoe
Test Date:2024-4-7

Range: 0 - 180DEG
Interval: 1.0DEG
Test System:EVERFINE GO-SPEX500_V1 SYSTEM V2.00.461
Humidity:65.0%
Test Distance:3.160m [K=1.0000]
Remarks: LAMP:BXRE-40G10TH-A-83 Ra:90
LENS:PM-0132C 60R
DRIVER:SC42W300-1050CG-4W 400mA
30minutes warm-up

WEC AND CCEC

Test:U:220.12V I:0.0792A P:15.915W PF:0.9089 Freq:49.99Hz Lamp Flux:2089x1 lm		
NAME: 2319.200-UA-400-HE	TYPE:	WEIGHT:
SPEC.: 4000K	DIM.:	SERIAL No.: 2404070260
MFR.: RISE	SUR.: 0.002826m2	Shielding Angle:

cc	80%			70%			50%			30%			10%			0
w	50%	30%	10%	50%	30%	10%	50%	30%	10%	50%	30%	10%	50%	30%	10%	0
fc	20%			20%			20%			20%			20%			0
RCR	RCR:Room Cavity Ratio						Wall Exitance Coefficients(WEC)									
0.0																
1.0	.154	.088	.028	.148	.085	.027	.137	.078	.025	.126	.073	.023	.116	.067	.022	
2.0	.147	.081	.025	.142	.078	.024	.132	.074	.023	.123	.069	.022	.115	.065	.021	
3.0	.140	.074	.022	.135	.073	.022	.127	.069	.021	.120	.066	.020	.113	.062	.019	
4.0	.133	.069	.020	.129	.068	.020	.122	.065	.019	.116	.062	.019	.109	.059	.018	
5.0	.127	.064	.019	.123	.063	.018	.117	.061	.018	.111	.059	.018	.106	.057	.017	
6.0	.121	.061	.017	.118	.060	.017	.113	.058	.017	.108	.056	.016	.103	.054	.016	
7.0	.115	.057	.016	.113	.056	.016	.108	.055	.016	.104	.053	.015	.100	.052	.015	
8.0	.111	.054	.015	.108	.053	.015	.104	.052	.015	.100	.051	.015	.096	.049	.014	
9.0	.106	.051	.014	.104	.051	.014	.100	.050	.014	.097	.048	.014	.093	.047	.014	
10.0	.102	.049	.014	.100	.048	.013	.097	.047	.013	.093	.046	.013	.090	.045	.013	

cc	80%			70%			50%			30%			10%			0
w	50%	30%	10%	50%	30%	10%	50%	30%	10%	50%	30%	10%	50%	30%	10%	0
fc	20%			20%			20%			20%			20%			0
RCR	RCR:Room Cavity Ratio			Ceiling Cavity Exitance Coefficients(CCEC)												
0.0	.175	.175	.175	.150	.150	.150	.102	.102	.102	.059	.059	.059	.019	.019	.019	
1.0	.157	.145	.134	.134	.124	.115	.092	.085	.080	.053	.049	.046	.017	.016	.015	
2.0	.142	.122	.105	.122	.105	.091	.083	.073	.063	.048	.042	.037	.015	.014	.012	
3.0	.130	.104	.084	.112	.090	.073	.077	.063	.051	.044	.037	.030	.014	.012	.010	
4.0	.121	.091	.068	.103	.078	.059	.071	.055	.042	.041	.032	.025	.013	.010	.008	
5.0	.112	.080	.056	.096	.069	.049	.066	.048	.034	.038	.028	.020	.012	.009	.007	
6.0	.105	.071	.047	.090	.062	.041	.062	.043	.029	.036	.025	.017	.012	.008	.006	
7.0	.099	.064	.040	.085	.056	.035	.059	.039	.025	.034	.023	.015	.011	.008	.005	
8.0	.094	.058	.034	.081	.051	.030	.056	.036	.021	.032	.021	.013	.011	.007	.004	
9.0	.089	.054	.030	.077	.046	.026	.053	.033	.018	.031	.019	.011	.010	.006	.004	
10.0	.085	.049	.026	.073	.043	.023	.051	.030	.016	.030	.018	.010	.010	.006	.003	

C Range: 0 - 360DEG
C Interval: 30.0DEG
Test Speed: HIGH
Temperature:25.3℃
Operators:zoe
Test Date:2024-4-7

Range: 0 - 180DEG
Interval: 1.0DEG
Test System:EVERFINE GO-SPEX500_V1 SYSTEM V2.00.461
Humidity:65.0%
Test Distance:3.160m [K=1.0000]
Remarks: LAMP:BXRE-40G10TH-A-83 Ra:90
LENS:PM-0132C 60R
DRIVER:SC42W300-1050CG-4W 400mA
30minutes warm-up

UGR(Unified Glare Rating) Table

Test:U:220.12V I:0.0792A P:15.915W PF:0.9089 Freq:49.99Hz Lamp Flux:2089x1 lm										
NAME: 2319.200-UA-400-HE					TYPE:			WEIGHT:		
SPEC.: 4000K					DIM.:			SERIAL No.: 2404070260		
MFR.: RISE					SUR.: 0.002826m2			Shielding Angle:		
ceiling/cavity	0.7	0.7	0.5	0.5	0.3	0.7	0.7	0.5	0.5	0.3
walls	0.5	0.3	0.5	0.3	0.3	0.5	0.3	0.5	0.3	0.3
working plane	0.2	0.2	0.2	0.2	0.2	0.2	0.2	0.2	0.2	0.2
Room dimensions	Viewed crosswise					Viewed endwise				
x = 2H y = 2H	18.3	19.2	18.5	19.4	19.5	18.5	19.4	18.7	19.6	19.7
3H	18.2	19.0	18.4	19.2	19.4	18.4	19.2	18.6	19.4	19.6
4H	18.1	18.9	18.4	19.1	19.3	18.3	19.1	18.6	19.3	19.5
6H	18.0	18.7	18.3	19.0	19.2	18.2	18.9	18.5	19.2	19.4
8H	18.0	18.6	18.3	18.9	19.2	18.2	18.9	18.5	19.1	19.4
12H	17.9	18.6	18.2	18.8	19.1	18.1	18.8	18.4	19.1	19.3
4H 2H	18.1	18.9	18.4	19.1	19.3	18.3	19.1	18.6	19.3	19.5
3H	18.0	18.6	18.3	18.9	19.2	18.2	18.8	18.5	19.1	19.4
4H	17.9	18.5	18.2	18.8	19.1	18.1	18.7	18.4	19.0	19.3
6H	17.8	18.3	18.1	18.6	19.0	18.0	18.5	18.4	18.8	19.2
8H	17.7	18.2	18.1	18.6	18.9	17.9	18.4	18.3	18.8	19.1
12H	17.7	18.1	18.1	18.5	18.9	17.9	18.3	18.3	18.7	19.1
8H 4H	17.7	18.2	18.1	18.6	18.9	17.9	18.4	18.3	18.8	19.1
6H	17.6	18.0	18.0	18.4	18.8	17.8	18.2	18.3	18.6	19.0
8H	17.6	17.9	18.0	18.3	18.8	17.8	18.1	18.2	18.5	19.0
12H	17.5	17.8	18.0	18.2	18.7	17.7	18.0	18.2	18.5	18.9
12H 4H	17.7	18.1	18.1	18.5	18.9	17.9	18.3	18.3	18.7	19.1
6H	17.6	17.9	18.0	18.3	18.8	17.8	18.1	18.2	18.5	19.0
8H	17.5	17.8	18.0	18.2	18.7	17.7	18.0	18.2	18.5	18.9
Variations with the observer position at spacings(CIE Pub.117):										
S = 1.0H	+ 3.5 / - 7.5					+ 3.6 / - 7.4				
1.5H	+ 5.9 / - 5.7					+ 6.0 / - 5.9				
2.0H	+ 1.9 / - 3.9					+ 2.8 / - 4.0				

CIE Pub.117, 2089 lm Total Lamp Luminous Flux Correct (8log(F/F0) = 2.6)
Area: 0.002826 m2

C Range: 0 - 360DEG
C Interval: 30.0DEG
Test Speed: HIGH
Temperature:25.3℃
Operators:zoe
Test Date:2024-4-7

Range: 0 - 180DEG
Interval: 1.0DEG
Test System:EVERFINE GO-SPEX500_V1 SYSTEM V2.00.461
Humidity:65.0%
Test Distance:3.160m [K=1.0000]
Remarks: LAMP:BXRE-40G10TH-A-83 Ra:90
LENS:PM-0132C 60R
DRIVER:SC42W300-1050CG-4W 400mA
30minutes warm-up

UTILIZATION FACTORS TABLE

Test:U:220.12V I:0.0792A P:15.915W PF:0.9089 Freq:49.99Hz Lamp Flux:2089x1 lm		
NAME: 2319.200-UA-400-HE	TYPE:	WEIGHT:
SPEC.: 4000K	DIM.:	SERIAL No.: 2404070260
MFR.: RISE	SUR.: 0.002826m2	Shielding Angle:

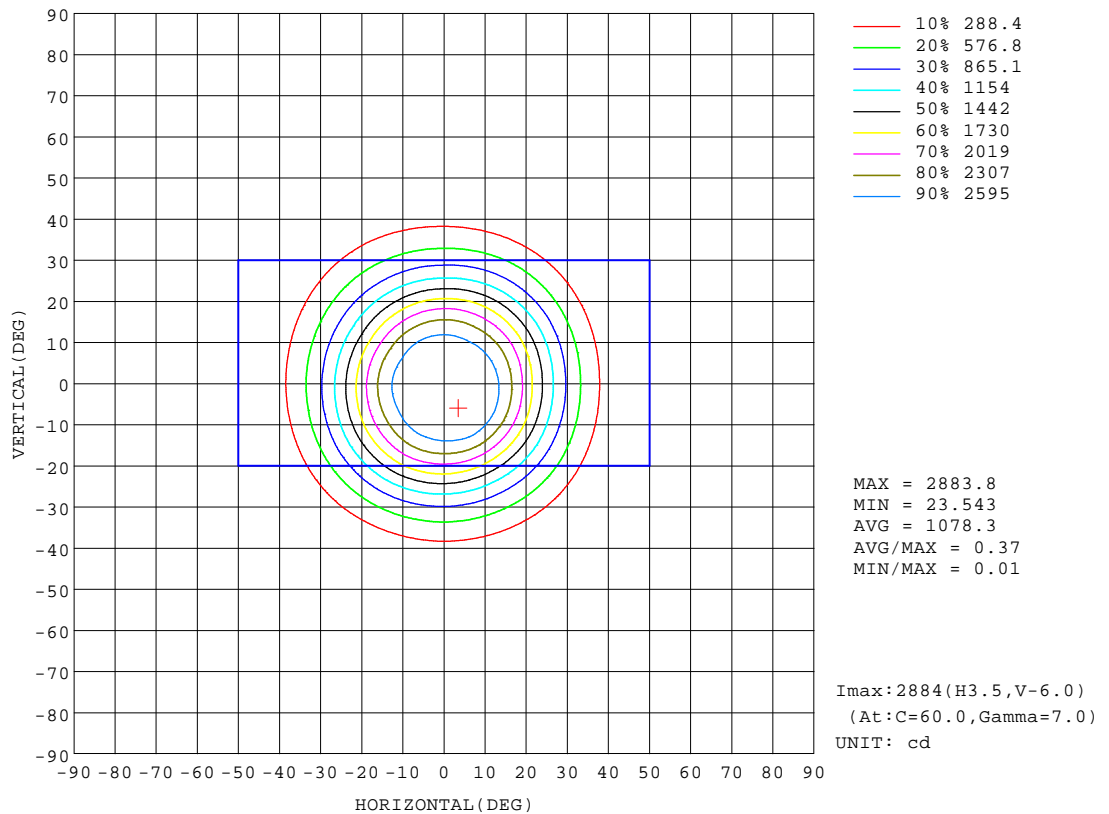
REFLECTANCE										
Ceiling	0.8	0.8	0.8	0.7	0.7	0.7	0.5	0.5	0.5	0
Walls	0.7	0.5	0.3	0.7	0.5	0.3	0.7	0.5	0.3	0
Working plane	0.2	0.2	0.2	0.2	0.2	0.2	0.2	0.2	0.2	0
ROOM INDEX	UTILIZATION FACTORS(PERCENT) $k(RI) \times RCR = 5$									
k = 0.60	81	76	72	81	76	72	80	75	72	69
0.80	88	83	80	87	83	79	86	82	79	76
1.00	92	87	84	91	87	84	90	86	83	80
1.25	96	91	88	95	90	88	93	89	87	83
1.50	98	94	91	97	93	90	95	92	89	85
2.00	100	97	94	99	96	93	97	94	92	87
2.50	102	98	96	100	97	95	97	95	93	88
3.00	103	100	98	101	99	97	98	96	95	89
4.00	105	102	101	103	101	99	100	98	97	90
5.00	106	104	102	104	102	101	100	99	98	91
ROOM INDEX	UF(total)									Direct
According to DIN EN 13032-2 2004			Suspended					SHRNOM = 1.25		

C Range: 0 - 360DEG
C Interval: 30.0DEG
Test Speed: HIGH
Temperature:25.3℃
Operators:zoe
Test Date:2024-4-7

Range: 0 - 180DEG
Interval: 1.0DEG
Test System:EVERFINE GO-SPEX500_V1 SYSTEM V2.00.461
Humidity:65.0%
Test Distance:3.160m [K=1.0000]
Remarks: LAMP:BXRE-40G10TH-A-83 Ra:90
LENS:PM-0132C 60R
DRIVER:SC42W300-1050CG-4W 400mA
30minutes warm-up

ISOCANDELA DIAGRAM

Test:U:220.12V I:0.0792A P:15.915W PF:0.9089 Freq:49.99Hz Lamp Flux:2089x1 lm		
NAME: 2319.200-UA-400-HE	TYPE:	WEIGHT:
SPEC.: 4000K	DIM.:	SERIAL No.: 2404070260
MFR.: RISE	SUR.: 0.002826m2	Shielding Angle:

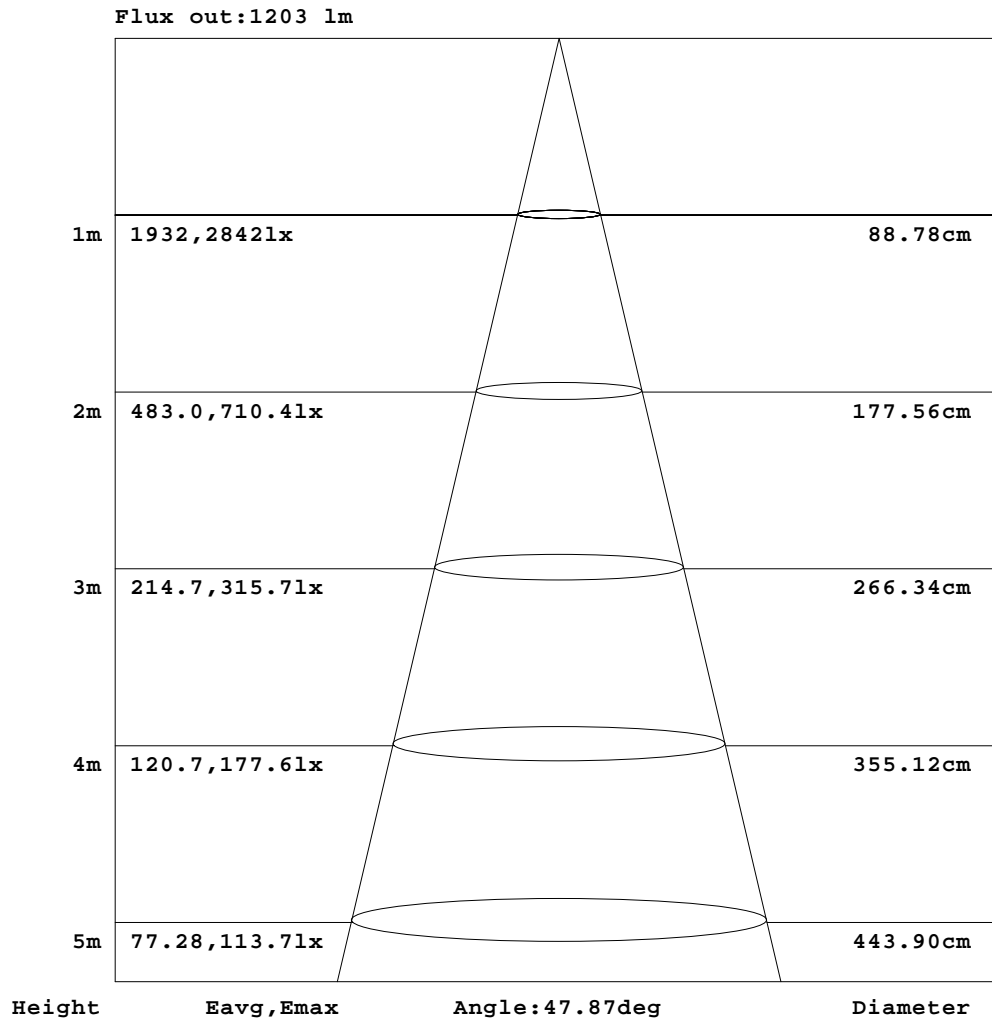


C Range: 0 - 360DEG
C Interval: 30.0DEG
Test Speed: HIGH
Temperature:25.3℃
Operators:zoe
Test Date:2024-4-7

Range: 0 - 180DEG
Interval: 1.0DEG
Test System:EVERFINE GO-SPEX500_V1 SYSTEM V2.00.461
Humidity:65.0%
Test Distance:3.160m [K=1.0000]
Remarks: LAMP:BXRE-40G10TH-A-83 Ra:90
LENS:PM-0132C 60R
DRIVER:SC42W300-1050CG-4W 400mA
30minutes warm-up

AAI Figure

Test:U:220.12V I:0.0792A P:15.915W PF:0.9089 Freq:49.99Hz Lamp Flux:2089x1 lm		
NAME: 2319.200-UA-400-HE	TYPE:	WEIGHT:
SPEC.: 4000K	DIM.:	SERIAL No.: 2404070260
MFR.: RISE	SUR.: 0.002826m2	Shielding Angle:



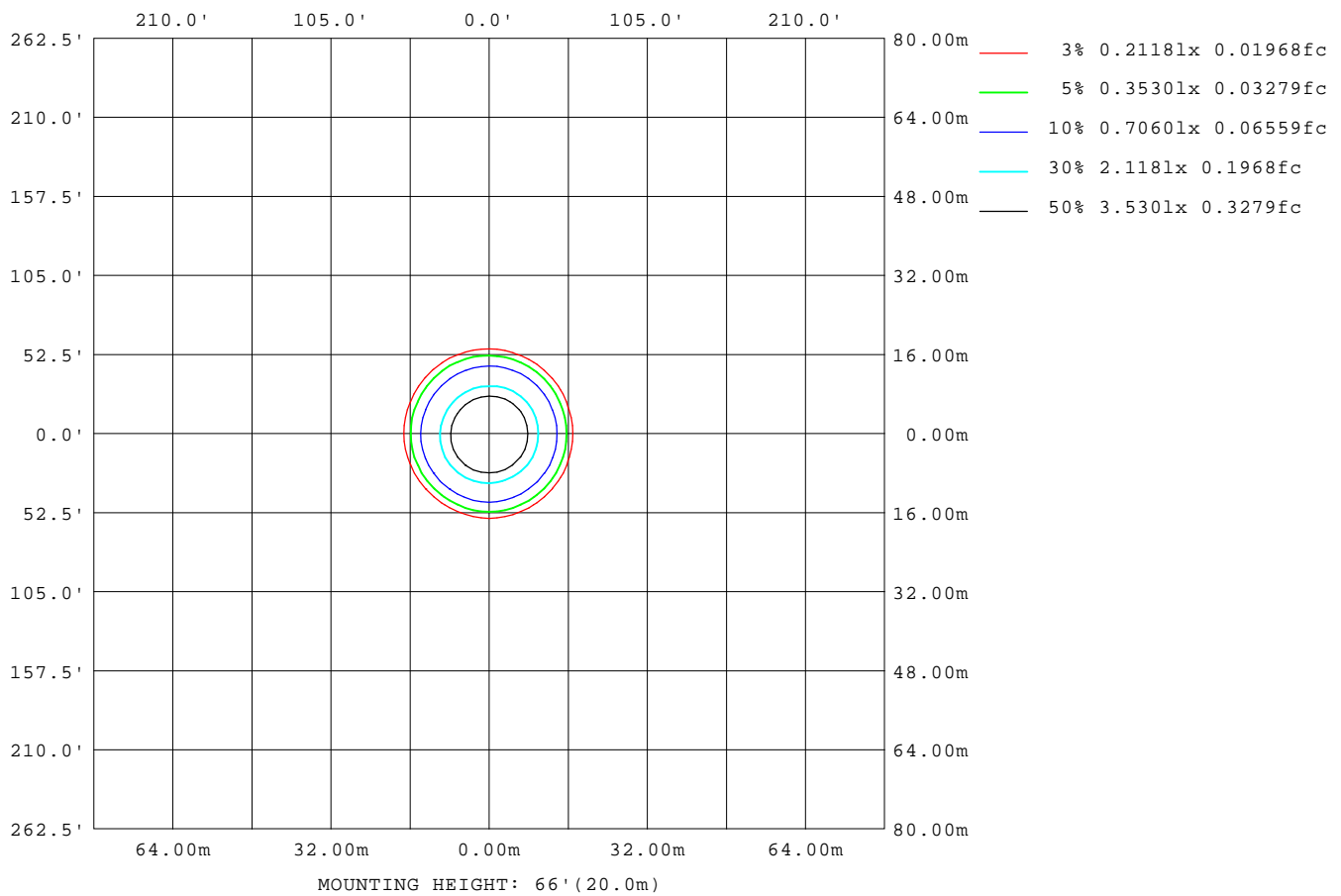
Note: The Curves indicate the illuminated area and the average illumination when the luminaire is at different distance.

C Range: 0 - 360DEG
C Interval: 30.0DEG
Test Speed: HIGH
Temperature: 25.3 °C
Operators: zoe
Test Date: 2024-4-7

Range: 0 - 180DEG
Interval: 1.0DEG
Test System: EVERFINE GO-SPEX500_V1 SYSTEM V2.00.461
Humidity: 65.0%
Test Distance: 3.160m [K=1.0000]
Remarks: LAMP: BXRE-40G10TH-A-83 Ra: 90
LENS: PM-0132C 60R
DRIVER: SC42W300-1050CG-4W 400mA
30minutes warm-up

ISOLUX DIAGRAM

Test:U:220.12V I:0.0792A P:15.915W PF:0.9089 Freq:49.99Hz Lamp Flux:2089x1 lm		
NAME: 2319.200-UA-400-HE	TYPE:	WEIGHT:
SPEC.: 4000K	DIM.:	SERIAL No.: 2404070260
MFR.: RISE	SUR.: 0.002826m2	Shielding Angle:



C Range: 0 - 360DEG
C Interval: 30.0DEG
Test Speed: HIGH
Temperature:25.3℃
Operators:zoe
Test Date:2024-4-7

Range: 0 - 180DEG
Interval: 1.0DEG
Test System:EVERFINE GO-SPEX500_V1 SYSTEM V2.00.461
Humidity:65.0%
Test Distance:3.160m [K=1.0000]
Remarks: LAMP:BXRE-40G10TH-A-83 Ra:90
LENS:PM-0132C 60R
DRIVER:SC42W300-1050CG-4W 400mA
30minutes warm-up

LED Avg.L Report

Test:U:220.12V I:0.0792A P:15.915W PF:0.9089 Freq:49.99Hz Lamp Flux:2089x1 lm		
NAME: 2319.200-UA-400-HE	TYPE:	WEIGHT:
SPEC.: 4000K	DIM.:	SERIAL No.: 2404070260
MFR.: RISE	SUR.: 0.002826m2	Shielding Angle:

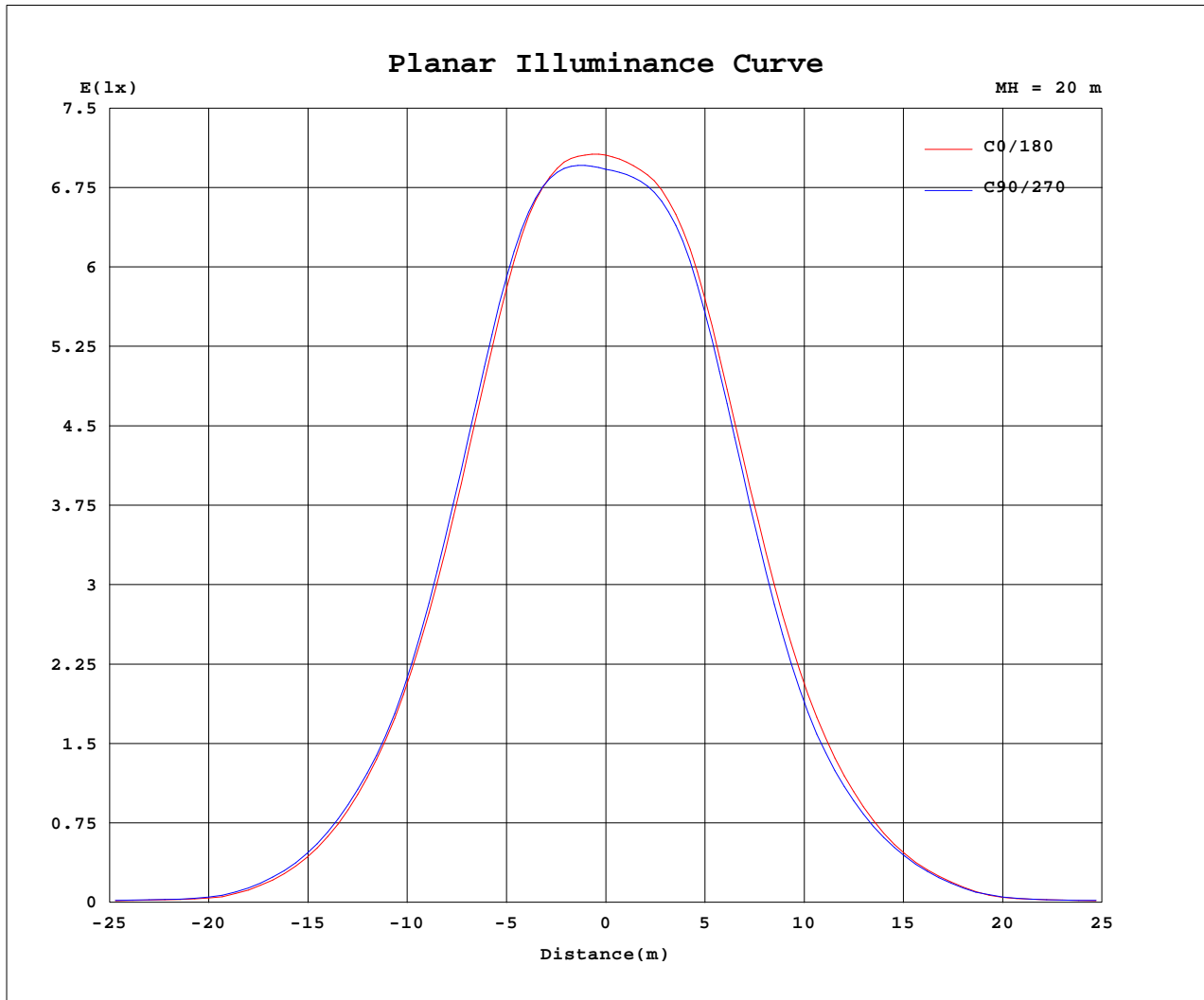
AvgL	cd/m2
L_0~180(65)av	6134
L_0~180(75)av	371
L_0~180(85)av	153
L_90~270(65)av	6527
L_90~270(75)av	358
L_90~270(85)av	140
L_45(65)av	6596
L_45(75)av	380
L_45(85)av	85

Standard: GB/T 29293-2012

C Range: 0 - 360DEG
C Interval: 30.0DEG
Test Speed: HIGH
Temperature:25.3℃
Operators:zoe
Test Date:2024-4-7

Range: 0 - 180DEG
Interval: 1.0DEG
Test System:EVERFINE GO-SPEX500_V1 SYSTEM V2.00.461
Humidity:65.0%
Test Distance:3.160m [K=1.0000]
Remarks: LAMP:BXRE-40G10TH-A-83 Ra:90
LENS:PM-0132C 60R
DRIVER:SC42W300-1050CG-4W 400mA
30minutes warm-up

Planar Illuminance Curve



C Range: 0 - 360DEG
 C Interval: 30.0DEG
 Test Speed: HIGH
 Temperature: 25.3 °C
 Operators: zoe
 Test Date: 2024-4-7

Range: 0 - 180DEG
 Interval: 1.0DEG
 Test System: EVERFINE GO-SPEX500_V1 SYSTEM V2.00.461
 Humidity: 65.0%
 Test Distance: 3.160m [K=1.0000]
 Remarks: LAMP: BXRE-40G10TH-A-83 Ra:90
 LENS: PM-0132C 60R
 DRIVER: SC42W300-1050CG-4W 400mA
 30minutes warm-up



LUMINOUS DISTRIBUTION INTENSITY DATA

Test:U:220.12V I:0.0792A P:15.915W PF:0.9089 Freq:49.99Hz Lamp Flux:2089x1 lm		
NAME: 2319.200-UA-400-HE	TYPE:	WEIGHT:
SPEC.: 4000K	DIM.:	SERIAL No.: 2404070260
MFR.: RISE	SUR.: 0.002826m2	Shielding Angle:

Table--1

UNIT: cd

C(DEG) (DEG)	0	30	60	90	120	150	180	210	240	270	300	330						
0	2796	2796	2796	2796	2796	2796	2796	2796	2796	2796	2796	2796						
5	2816	2840	2852	2839	2825	2794	2773	2757	2761	2783	2780	2805						
10	2752	2798	2821	2813	2793	2738	2696	2660	2667	2704	2700	2736						
15	2431	2486	2521	2534	2520	2460	2393	2333	2333	2379	2387	2435						
20	1890	1934	1948	1990	2005	1957	1868	1796	1785	1822	1866	1915						
25	1310	1338	1324	1376	1405	1384	1305	1235	1214	1228	1293	1337						
30	826	843	834	865	880	876	833	791	768	774	817	840						
35	449	467	466	489	477	478	473	457	453	453	462	459						
40	188	200	202	217	203	213	220	215	220	212	206	198						
45	48.3	53.5	58.1	59.9	54.6	53.6	57.6	62.0	65.0	61.8	54.4	51.4						
50	32.7	35.9	36.8	36.1	35.5	34.0	32.2	34.1	34.5	33.8	33.1	32.8						
55	25.5	27.8	28.4	28.4	28.5	27.3	25.7	26.6	27.0	26.5	26.6	25.9						
60	15.6	16.8	17.4	17.7	18.2	17.6	16.6	16.8	17.2	16.5	16.5	15.8						
65	6.99	7.56	7.86	7.93	8.39	8.03	7.66	7.83	8.11	7.66	7.75	7.22						
70	2.60	3.05	3.08	2.94	3.37	3.15	2.88	3.07	3.09	2.69	2.98	2.80						
75	0.19	0.19	0.21	0.30	0.37	0.45	0.35	0.32	0.36	0.22	0.16	0.16						
80	0.05	0.04	0.04	0.05	0.04	0.04	0.05	0.03	0.03	0.04	0.03	0.03						
85	0.04	0.02	0.02	0.04	0.03	0.03	0.04	0.02	0.02	0.03	0.02	0.02						
90	0.00	0.00	0.00	0.00	0.00	0.00	0.00	0.00	0.00	0.00	0.00	0.00						
95	0.00	0.00	0.00	0.00	0.00	0.00	0.00	0.00	0.00	0.00	0.00	0.00						
100	0.00	0.00	0.00	0.00	0.00	0.00	0.00	0.00	0.00	0.00	0.00	0.00						
105	0.00	0.00	0.00	0.00	0.00	0.00	0.00	0.00	0.00	0.00	0.00	0.00						
110	0.00	0.00	0.00	0.00	0.00	0.00	0.00	0.00	0.00	0.00	0.00	0.00						
115	0.00	0.00	0.00	0.00	0.00	0.00	0.00	0.00	0.00	0.00	0.00	0.00						
120	0.00	0.00	0.00	0.00	0.00	0.00	0.00	0.00	0.00	0.00	0.00	0.00						
125	0.00	0.00	0.00	0.00	0.00	0.00	0.00	0.00	0.00	0.00	0.00	0.00						
130	0.00	0.00	0.00	0.00	0.00	0.00	0.00	0.00	0.00	0.00	0.00	0.00						
135	0.00	0.00	0.00	0.00	0.00	0.00	0.00	0.00	0.00	0.00	0.00	0.00						
140	0.00	0.00	0.00	0.00	0.00	0.00	0.00	0.00	0.00	0.00	0.00	0.00						
145	0.00	0.00	0.00	0.00	0.00	0.00	0.00	0.00	0.00	0.00	0.00	0.00						
150	0.00	0.00	0.00	0.00	0.00	0.00	0.00	0.00	0.00	0.00	0.00	0.00						
155	0.00	0.00	0.00	0.00	0.00	0.00	0.00	0.00	0.00	0.00	0.00	0.00						
160	0.00	0.00	0.00	0.00	0.00	0.00	0.00	0.00	0.00	0.00	0.00	0.00						
165	0.00	0.00	0.00	0.00	0.00	0.00	0.00	0.00	0.00	0.00	0.00	0.00						
170	0.00	0.00	0.00	0.00	0.00	0.00	0.00	0.00	0.00	0.00	0.00	0.00						
175	0.00	0.00	0.00	0.00	0.00	0.00	0.00	0.00	0.00	0.00	0.00	0.00						
180	0.00	0.00	0.00	0.00	0.00	0.00	0.00	0.00	0.00	0.00	0.00	0.00						

C Range: 0 - 360DEG
C Interval: 30.0DEG
Test Speed: HIGH
Temperature:25.3℃
Operators:zoe
Test Date:2024-4-7

Range: 0 - 180DEG
Interval: 1.0DEG
Test System:EVERFINE GO-SPEX500_V1 SYSTEM V2.00.461
Humidity:65.0%
Test Distance:3.160m [K=1.0000]
Remarks: LAMP:BXRE-40G10TH-A-83 Ra:90
LENS:PM-0132C 60R
DRIVER:SC42W300-1050CG-4W 400mA
30minutes warm-up